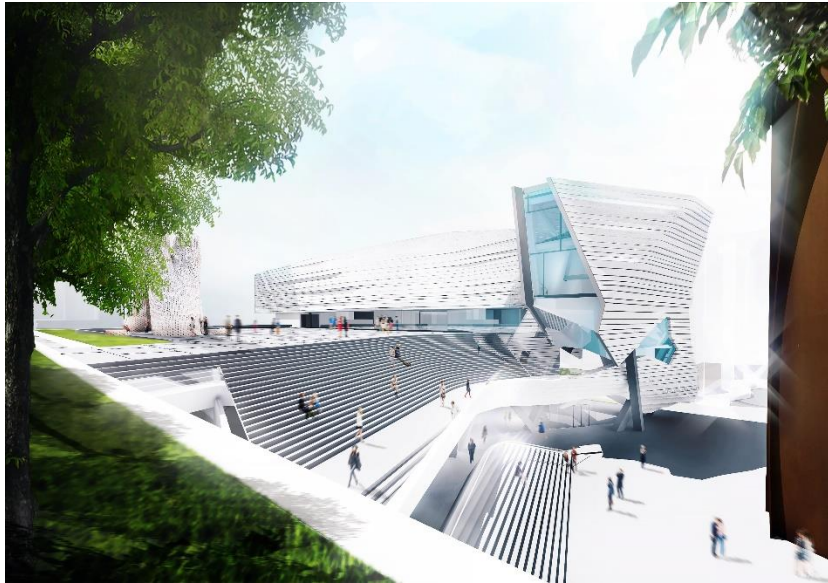


m o r p h o s i s

OCMA

THE ORANGE COUNTY MUSEUM OF ART UNVEILS DESIGN FOR ITS NEW HOME AT SEGERSTROM CENTER FOR THE ARTS

New Building by Thom Mayne and Morphosis to Open in 2021



COSTA MESA, CA, May 31, 2018—Craig Wells, President of the Board of Trustees, and Todd D. Smith, Director & CEO, of the Orange County Museum of Art (OCMA), today unveiled the design for the museum’s new building at Segerstrom Center for the Arts in Costa Mesa, CA, created by Morphosis, the global architecture and design firm led by Pritzker Prize-winner Thom Mayne. Expanding on the museum’s legacy of community enrichment and presentation of modern and contemporary art from artists rooted in Southern California and the Pacific Rim, OCMA’s new home will be defined by an open and engaging urban presence within Orange County’s largest center for arts and culture.

Groundbreaking for the new building will take place in 2019, with a projected opening in 2021. OCMA will close its Newport Beach location on June 17, following a celebrated 41-year history at its current location. Temporary exhibitions and programs will be presented starting this fall at a gallery space in South Coast Plaza Village in Santa Ana. Morphosis was selected to design the new OCMA building following a multi-year planning process and international search.

“Morphosis has designed an extraordinary new home for the museum, which will support our mission of enriching the lives of a diverse and changing community through innovative and thought-provoking presentations of modern and contemporary art,” said Mr. Smith. “The change will be transformational, as we continue to grow and play an ever-larger role in southern California’s dynamic arts scene.”

“Morphosis’ design for the museum evolved from both the ‘outside-in’ and the ‘inside-out,’” said Mr. Mayne. “The building is a final puzzle piece for the campus at Segerstrom Center for the Arts, responding to the form of the neighboring buildings and energizing the plaza with a café and engaging public spaces. At the same time, the design also responds to a desire to enhance access to OCMA’s permanent collection through neutral, flexible exhibition spaces that can complement art of all media.”

“The move to Segerstrom Center for the Arts fulfills the museum’s longstanding priority of better serving its visitors with an expanded program of concurrent special exhibitions and installations from the collection,” said Mr. Wells. “We are tremendously grateful for the support of the generous donors and partners in this project who are joining us in this bold vision for the future.”

With nearly 25,000 square feet of exhibition galleries—approximately 50 percent more than in the current location—the new 52,000-square-foot museum will allow OCMA to organize major special exhibitions alongside spacious installations from its world-traveled collection. It will also feature an additional 10,000 square feet for education programs, performances, and public gatherings, and will include administrative offices, a gift shop, and a café.

Designed to provide flexible and functional spaces while creating an inviting and memorable atmosphere, the building has a main floor dedicated to reconfigurable open-span exhibition space. Complementing this space are mezzanine and street-front galleries that can accommodate temporary and permanent collection exhibitions spanning a variety of scales and mediums. A spacious roof terrace, equivalent in size to 70 percent of the building’s footprint, serves as an extension of the galleries, with open-air spaces that can be configured for installations, a sculpture garden, outdoor film screenings, or events. Hovering over the soaring, light-filled lobby atrium is an inspiring and dynamic architectural space for performance and education, illuminated by a full-height window overlooking the terrace. On the outside, a grand public stair curves toward the entry, linking the museum to Segerstrom Center for the Arts’ Argyros Plaza and the adjacent performing arts venues, and creating an inviting public gathering space for pedestrians and visitors. A distinctive façade of light-colored, undulating bands of metal paneling, glazed curtain wall, and exposed concrete plays off the forms and language of neighboring works of architecture.

The building’s design choreographs a rich and diverse visitor experience, from approach and entry to procession through the galleries, concluding with an invitation to linger on the steps, in the café, or in the museum store. With its gradient of architectural intensity, from complex forms at the museum’s entry to rectilinear and flexible forms within the galleries, the building is a memorable and striking environment that connects indoor and outdoor spaces.

About the Orange County Museum of Art

Along with its predecessor institution, the Newport Harbor Art Museum, OCMA has an established reputation as an innovative art museum with a history of actively discovering and engaging with living artists at pivotal points in their careers. The museum has organized and presented critically praised exhibitions that have traveled nationally and internationally to more than 35 museums nationally and internationally. The museum’s collection of more than 3,500 works of art include important examples by artists from Southern California including John Baldessari, Chris Burden, Vija Celmins, Bruce Conner, Richard Diebenkorn, Robert Irwin, Catherine Opie, Charles Ray, and Ed Ruscha. Recognizing the growing influence of the Pacific Region within Southern California and the art world in general, in recent years

the museum has broadened its focus to include artists of the Pacific Rim, transforming its biennial series into the California-Pacific Triennial, the first in the world to examine the totality of contemporary art from Pacific Rim. In the last five years, OCMA has featured works by artists from 23 Pacific Rim countries, including Australia, Cambodia, Canada, China, Colombia, Indonesia, Japan, Mexico, New Zealand, South Korea and Vietnam.

As the preeminent visual arts organization in Orange County, OCMA is committed to making the arts accessible to all, and offers a host of programs that engage the community with contemporary art and artists.

About Morphosis

Morphosis is a global architecture and design firm, creating compelling work that is intelligent, pragmatic, and powerful. For more than 40 years, Morphosis has practiced at the intersection of architecture, urbanism, and design, working across a broad range of project types and scales, including civic, academic, cultural, commercial, residential, and mixed-use; urban master plans; and original publications, objects, and art. Committed to the practice of architecture as a collaborative enterprise, founder and Pritzker Prize-winning architect Thom Mayne works in tandem with principals Arne Emerson, Ung-Joo Scott Lee, Brandon Welling, and Eui-Sung Yi, and a team of more than 60 in Los Angeles, New York, Shanghai, and Seoul. At the root of all Morphosis projects is a focus on rigorous research and innovation, prioritizing performance-driven design that is environmentally, socially, and economically sustainable. Through its research arm, The Now Institute, the firm collaborates with academic institutions to create design-based solutions for the pressing issues of the day, from mobility, urban revitalization, and sustainability to public policy, planning, and community outreach.

###

Media Contacts

Polskin Arts & Communications Counselors

Maura Klosterman / maura.klosterman@finnpartners.com / +1 (310) 552-4117

Ruth Frankel / ruth.frankel@finnpartners.com / +1 (646) 213-7249

Resnicow and Associates

Maria May, mmay@resnicow.com, 212-671-5170

Racheal Campbell, rcampbell@resnicow.com, 212-671-5157

Claire Hurley, churley@resnicow.com, 212-671-5169

Image credit: Morphosis Architects