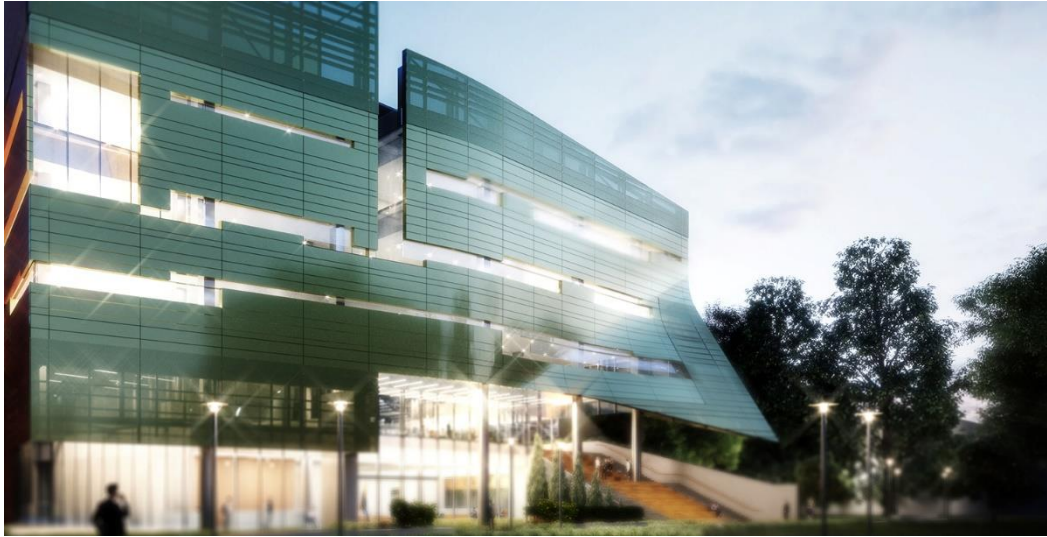


## Morphosis Breaks Ground on New, Purpose-Built Facility for the University of South Florida’s Judy Genshaft Honors College

*Featuring flexible outdoor and indoor spaces, the new building enhances opportunities for community building, collaboration, and creativity*



**Tampa, FL – December 7, 2020** – Global architecture and design firm Morphosis announced the groundbreaking on a new, purpose-built facility for the Judy Genshaft Honors College at the University of South Florida (USF). Situated on USF’s campus in Tampa, Florida, the five-story, 85,000-square-foot building marks a significant milestone in the university’s ongoing expansion and growth. When complete, the building will provide an inspiring and welcoming new home for the Honors Program by providing ample flexible spaces that foster and enhance interdisciplinary exchange between students, faculty, staff, and the broader USF community. Construction is expected to be completed in late fall 2022.

Highly visible from USF’s central campus and accessible via multiple entry points, the design for the new building emphasizes spaces that promote community engagement, collaboration, and creativity. A centrally located atrium anchors the building, which will house classrooms, labs, study areas, offices, and a publicly accessible café. The atrium, which connects all users into a single spatial experience, is lined with learning lofts that encourage interaction and collaboration. On the ground floor, flexible spaces adjacent to the atrium can be opened and combined to accommodate large-scale events. The second floor features an exterior, shaded terrace—accessible from inside and outside of the building—which serves as an outdoor study and meeting space. Overlooking the campus Quad, this terrace is also connected to an outdoor amphitheater.

“The new Judy Genshaft Honors College will bring together brilliant young scholars, scientists, and artists under a single new home. The building provides an expansive and unique set of spaces which reflect the diversity of the Honors College community, ranging from music rooms to lab spaces to a kitchen studio. It’s ultimately a place of collaboration, discussion, exploration, and, most importantly, engagement,” said Morphosis Partner and Project Principal Ung-Joo Scott Lee.

The lower-form of the five-story building promotes greater pedestrian activity, which in turn increases the frequency of casual encounters and informal meetings critical for interdisciplinary collaboration. Through sustainable forms and features, the new facility strives to achieve LEED silver in accordance with USF's campus-wide environmental goals.

"The Judy Genshaft Honors College building will be a remarkable enhancement to our world-class Honors College and will benefit USF, its students and its faculty. The new building will advance USF's strategic goals and long-term aspirations to attract and support the success of Florida's most accomplished students. We are deeply grateful for the generosity of Judy Genshaft and Steve Greenbaum," USF President Steve Currall said.

Among the nation's premier public honors colleges, USF's Judy Genshaft Honors College brings together students, faculty, and advisors in a close academic community that provides specialized experiences as well as advanced educational and scholarship opportunities. Since its founding, the Honors College has been housed in different locations across USF's campus, though a continuously evolving curriculum has necessitated a dedicated space for its program. The new, purpose-built facility will not only provide the Honors College with a free-standing building tailored to its program and strategically woven into USF's campus, but will also allow it to accommodate an additional 600 students, bringing its total number of students to 3,000.

### **About Morphosis**

Morphosis is a global architecture and design firm, creating compelling work that is intelligent, pragmatic, and powerful. For more than 40 years, Morphosis has practiced at the intersection of architecture, urbanism, and design, working across a broad range of project types and scales, including civic, academic, cultural, commercial, residential, and mixed-use; urban master plans; and original publications, objects, and art. Committed to the practice of architecture as a collaborative enterprise, founder and Pritzker Prize-winning architect Thom Mayne works in tandem with Partners Arne Emerson, Ung-Joo Scott Lee, Brandon Welling, and Eui-Sung Yi, and a team of more than 60 in Los Angeles, New York, and Shenzhen. At the root of all Morphosis projects is a focus on rigorous research and innovation, prioritizing performance-driven design that is environmentally, socially, and economically sustainable. Through its research arm, The Now Institute, the firm collaborates with academic institutions to create design-based solutions for the pressing issues of the day, from mobility, urban revitalization, and sustainability to public policy, planning, and community outreach. For more information, visit [www.morphosis.com](http://www.morphosis.com).

### **About the University of South Florida**

The University of South Florida is a high-impact global research university dedicated to student success. Over the past 10 years, no other public university in the country has risen faster in U.S. News and World Report's national university rankings than USF. Serving more than 50,000 students on campuses in Tampa, St. Petersburg and Sarasota-Manatee, USF is designated as a Preeminent State Research University by the Florida Board of Governors, placing it in the most elite category among the state's 12 public universities. USF has earned widespread national recognition for its success graduating under-represented minority and limited-income students at rates equal to or higher than white and higher income students. USF is a member of the American Athletic Conference. Learn more at [www.usf.edu](http://www.usf.edu).

### **Media Contacts:**

Resnicow and Associates

May Wijaya, [mwijaya@resnicow.com](mailto:mwijaya@resnicow.com) / 212-671-5167

Jill Mediatore, [jmediatore@resnicow.com](mailto:jmediatore@resnicow.com) / 212-671-5164